



# TNMCorps News

## INSIDE THIS ISSUE

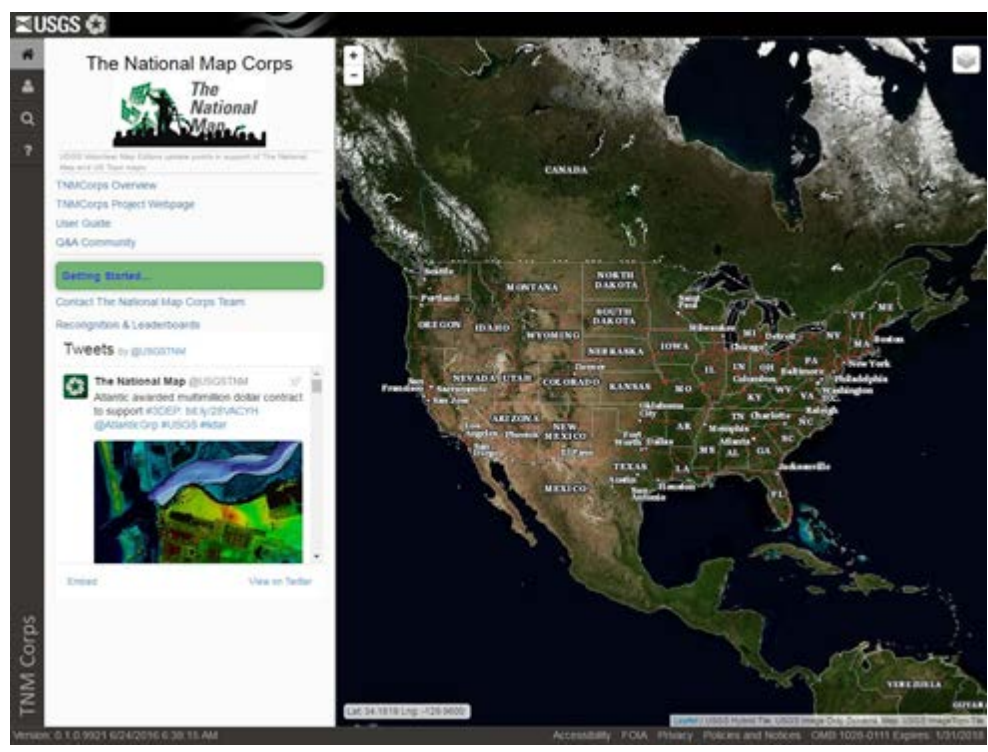
- 1 [Welcome](#)
- 1 [Exciting News! Introducing Our New Editor!](#)
- 2 [New Editor....continued](#)
- 3 [Summer Vacation...For YOU, not Us!](#)
- 3 [What Steps Do I Need to Take Before the Big Move?](#)
- 4 [KentRobert Takes Flight with The Squadron of Biplane Spectators-6000+ Edits](#)
- 5 [Mapping Challenge Updates](#)
- 6 [Edit Points – Get the Patch!!](#)
- 6 [Have a story or photo you'd like to share?](#)
- 6 [Words from the Wise – Mole Trapper](#)
- 6 [Stay Tuned...](#)
- 7 [TNMCorps Team Corner](#)
- 7 [New Recognition Category Members](#)

## Welcome!

Welcome to our Newsletter! We hope you enjoy reading it as much as we enjoy putting it together. Please feel free to email us with suggestions, pictures, or tips and tricks at [nationalmapcorps@usgs.gov](mailto:nationalmapcorps@usgs.gov).

## Exciting News! Introducing Our New Editor!

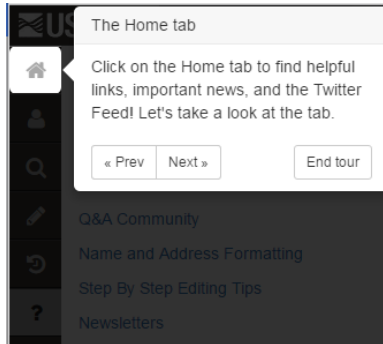
At the beginning of August we will be moving to a new and improved TNMCorps web map editor! The new web map editor will allow for a faster and more efficient process of moving edits into the National Structures Dataset (NSD). With the new editor many edits will enter the NSD within 1-2 days, and edited points which fail to move into the NSD will be flagged and internally reviewed.



## New Editor....continued

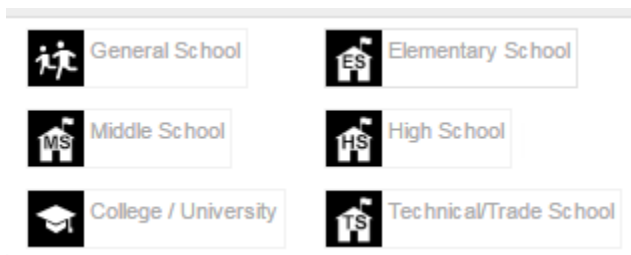
Although the basic editing process will stay the same, we've been working hard to make our editor more user friendly. Some of the major changes include:

- **A TOUR** to show you around the new editor and introduce you to the new features.



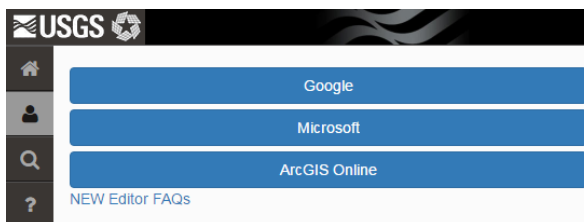
*You've spoken and we've listened: you will now be able to view features based on specific types!*

- **A new, simpler interface:** We've cleaned up the main interface to make it easier to navigate.
- **Updated icons for structure features:** We've improved the current icons and added new ones for each different type of school.



*With the new editor, it will be easier to keep track of what you are editing with the new select tool.*

- **Consolidated user guide:** We've streamlined our user guides and examples to get new users editing faster.
- **Third party login using Google, Microsoft, or ArcGIS Online:** With third party login capability, your password stays confidential between you and your login provider and you don't have to remember yet another one!



- **Ability to select and display specific features:** We've added a new dropdown menu so you can choose to view only the features you are interested in editing.
- **Single window used by both Standard Editors and Peer Reviewers:** Instead of having to switch between different tabs, we've included a simple dropdown option so you can select your editing role.



Easy to see what you've selected.

## Summer Vacation...For YOU, not Us!

Between **July 9th and August 1** (approximately) our current Web Editor will be taken offline while we change over to the new editor. During this time, you'll be unable to edit, but never fear...TNMCorps Team will still be here diligently updating documentation, answering questions, and doing what we can to ease the transition.

Please continue editing up until the very end. All of your edits will be incorporated into the new database.

Expect to hear more from us in July as we endeavor to keep you apprised of the upcoming changes.



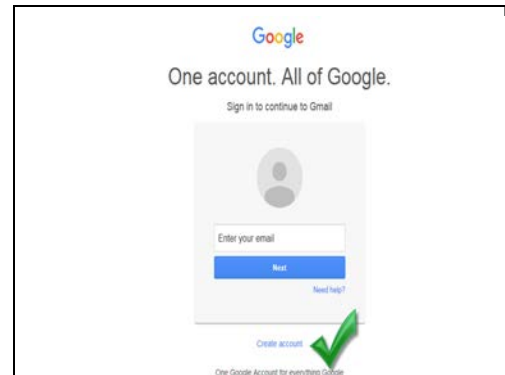
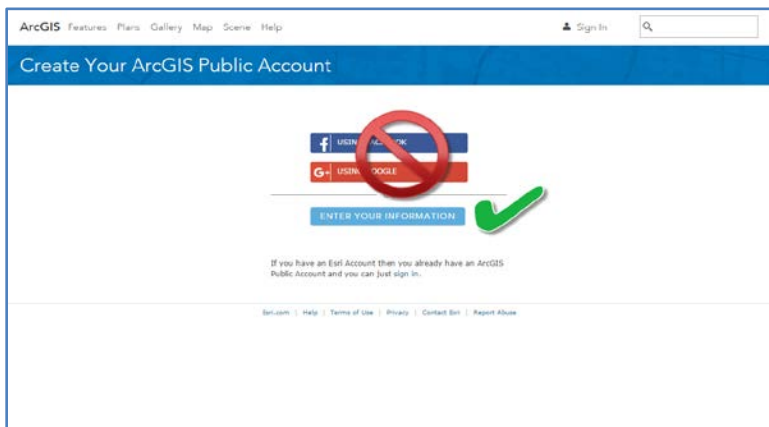
Vacation!

## What Steps Do I Need to Take Before the Big Move?

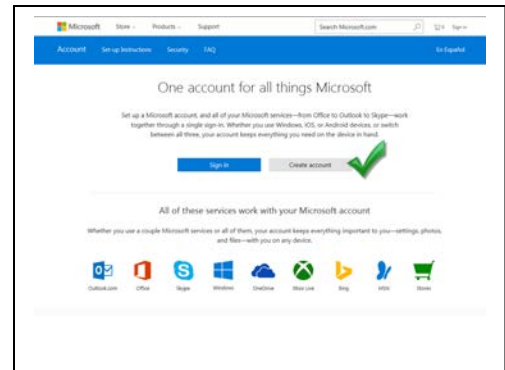
Glad you asked! Moving to the new editor will require you to register with the NEW EDITOR, and although your total points edited will not show up right away, your totals will still be reflected on the Recognition Page. It will help us put everything together if you keep the same username, or let us know if you decide to change it.

Those of you without obvious Google or Microsoft based email accounts will be hearing from us soon with possible solutions on how to prepare for the new editor. The short answer is if you don't have a [Google](#)® or [Microsoft](#)® based account, you can either set one up (Gmail, Hotmail, Outlook, Live, MSDN, etc.), or, if you don't want to set up another email account, you can create a FREE account on [Esri ArcGIS Public Account](#). We will include helpful links and steps for setting up a new account in our FAQs, or we will be happy to step you through the process.

*Continue editing up until you can no longer access the current editor...all of your edits will be preserved.*



Gmail email account



Microsoft email account

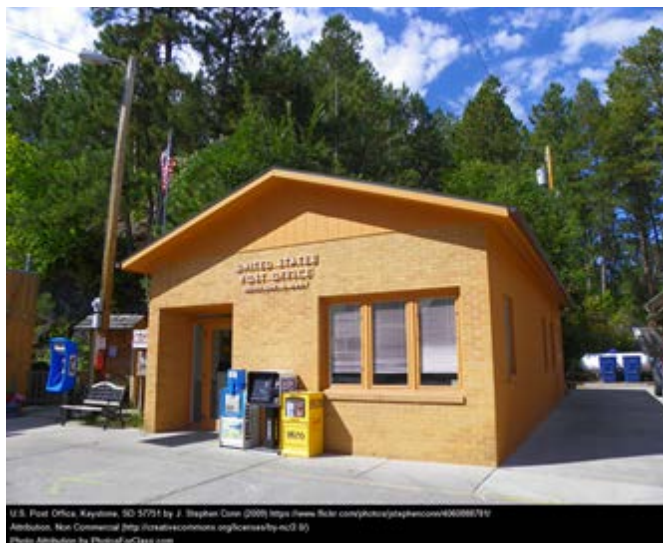
## KentRobert Takes Flight with The Squadron of Biplane Spectators-6000+ Edits

On the advice from his son, "Dad, this is something I know you will like," KentRobert signed up to be a Map Editor in February of 2015. He quickly caught on and got caught up in what he likes to call "searching, mysteries, and solving." Take for example "The Mystery of the Missing Fire Station," when KentRobert found a driveway but no building! Turns out, the fire station was built into the side of a hill. Another mystery resulted in a road trip with his son and grandsons. They were on the hunt for a possible cemetery location KentRobert was trying to find on the aerial photography. Turns out what he had seen in the photo was a big sheet of plywood and no sign of the cemetery anywhere around.

KentRobert rapidly became one of our more active community members even writing a few newsletter articles including "[What the Park Brochure Doesn't Tell You About Yellowstone National Park](#)" in August 2015, and "[A Letter from the Past](#)" in October 2015.

When I asked KentRobert what kept him engaged with the project he said he "kept uncovering unique aspects" of the area he was working in. "For instance," he said, "did you know there are a series of towns in South Dakota that really know the meaning of sharing? There are three towns sharing a post master. Opening hours are staggered through the day as the single employee commutes from one town to another...up to two hours one way. Some towns take it even further sharing a liquor store and a bar! In another town, being the sheriff also means you are responsible for the water system."

When ask about the move to the new editor? KentRobert says not to worry. He's tested the new editor and says "the new site will be much easier, and the data will be better." Thanks for that vote of confidence, KentRobert! More importantly, thank you for your contributions to the project!!



## Mapping Challenge Updates

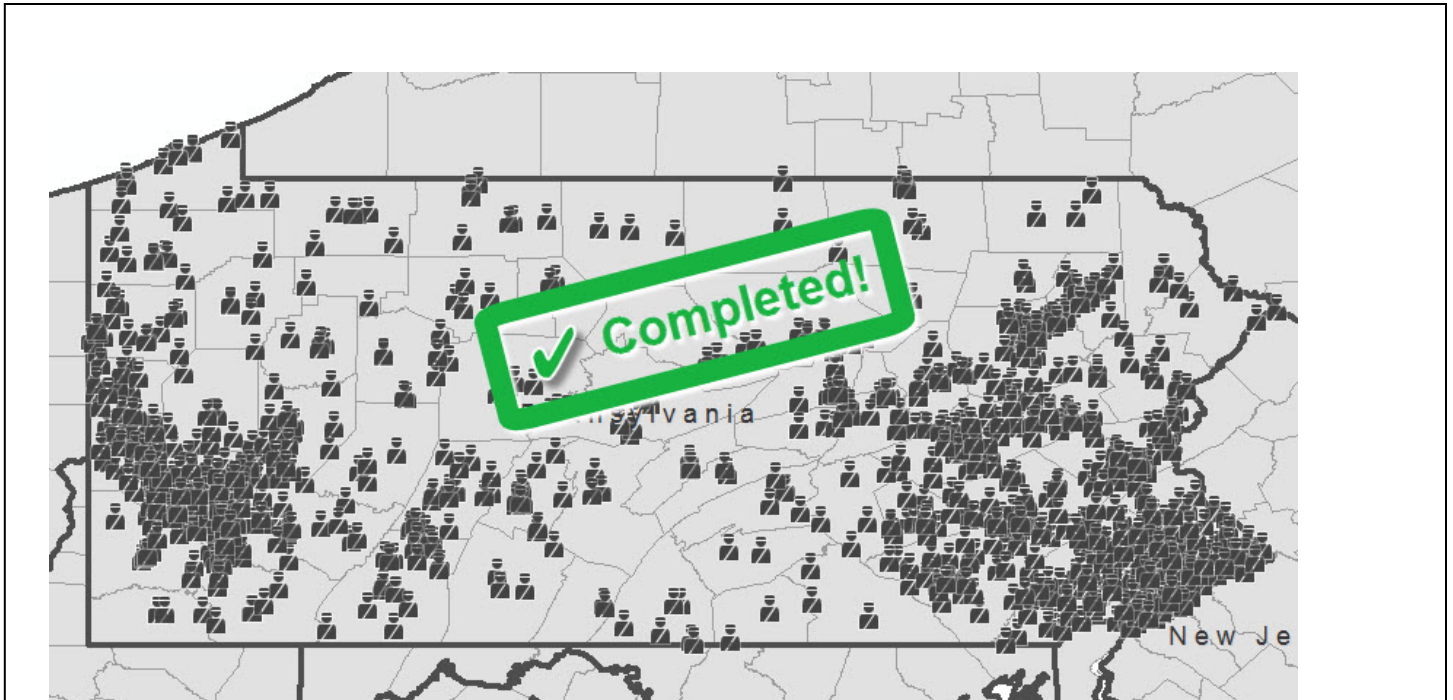
It took a while, but our BIGGEST mapping challenge ever (PA Law Enforcement) is finished! ...and just in time for those updates to make it onto the upcoming revision of the [US Topo](#) maps for Pennsylvania! Thanks to our volunteers all of the over 980 unique Law Enforcement points in PA were updated, verified, added, or removed, and all but one were peer reviewed or checked by an advanced editor!



Thank you to the participants in this challenge:

A\_Wallace, Cartograsaurus, CourtneyRose, Covert9, DoeringSA\_AICP, Eolian, Geo5492, GeospatialBeatles, HGeisler, Medic922, StevenHill, Twigs, bonnieblue85, geo163, mappal, mgelizabeth, msean2, rjerrard, rstevenson, trista.

Special shout out to rjerrard for participating in their 5th mapping challenge! Keep up the awesome work!



Help us keep up the momentum by switching over to New York Law Enforcement points! A lot has been done, but there are still a lot of points that need to be checked. Please see the [status map](#) on the mapping challenge page to see what still needs to be done. This challenge will be closing within the next couple of weeks. Let's see how much we can get done! Don't forget, volunteers who contribute in the challenge area will be recognized on this page and also tweeted on [The National Map Twitter](#) account.

## Edit Points – Get the Patch!!

In celebration of common passions and in honor of [GIS Day](#) and [International Map Year](#), TNMCorps is encouraging volunteers to edit 2,016 features between GIS Day 2015 and GIS Day 2016. Volunteers who contribute 2,016 edits between November 18, 2015 and November 16, 2016 will be awarded with a special edition collectable embroidered patch.

Many of you have accepted [the challenge](#) and a handful of you have already REACHED the goal!!

We are pleased to unveil the final patch design, seen to the right.

Check out the [recognition page](#) to see the recently unveiled [leaderboard](#) and find out who has reached the goal of 2,016 points edited and where you currently stand in the rankings.



Actual patch for the TNMCorps editing campaign - in honor of GIS Day and International Map Year.

## Have a story or photo you'd like to share?

We want them! This could be anything from a photo of you verifying a structure or an interesting story that you discovered while editing. Photos, graphics, and stories may be used in future news releases and social media posts. All materials submitted become part of the "[public domain](#)," and can be used by USGS in the future unless otherwise specified.

Please email them to [nationalmapcorps@usgs.gov](mailto:nationalmapcorps@usgs.gov).

## Words from the Wise....

From Volunteer Map Editor Mole Trapper:

"Doing research for better and reliable sources of information I had a long chat with an administration employee of the California Department of Education. She told me that the CED does not require any school to register with their department so any information in their database is strictly voluntary. More accurate information on schools would be from the county level or better yet from the school district the school is in.

Since California is one of the largest school programs I am wondering if other states work the same way. If so I would recommend our editors to glean their information from her recommended sources. It would give us good info as to active schools, closed schools or ones no longer in use. Also when there are several schools using the same buildings.

Just some information I thought might be useful."

## Stay Tuned....

Stay tuned as we create a new FAQ specifically for questions about the new editor. After the launch we'll hold weekly web meetings that you can call into for a live introduction to the new editor along with a Q&A session.



# TNMCORPS Team Corner



Emily has been a student contractor with The National Map Corps for almost two months. She is currently working on a Master of Arts in Applied Geography and Geospatial Science at the University of Colorado Denver and completed a graduate GIS certificate from UCD in May, 2015. Last summer she had the chance to intern with AidData in Kampala, Uganda where her basic GIS skills were put to the ultimate test! Before deciding to pursue geospatial science she taught English as a Second Language and entry level job skills to refugees resettled in Denver; an experience that ultimately inspired her to pursue GIS and Geography. Emily is honored to be a part of the USGS TNMCORPS!

## New Recognition Category Members



**Squadron of Biplane Spectators (6000-6999)**

- 



**Ring of Reconnaissance Rocketeers (5000-5999)**

- msean21



**Flock of Winged Witnesses (4000-4999)**

- 



**Family of Floating Photogrammetrists (3000-3999)**

- 



**Theodolite Assemblage (2000-2999)**

- superlemur
- DillonParker8



**Alidade Alliance (1000-1999)**

- superlemur
- DillonParker8



**Stadia Board Society (500-999)**

- superlemur
- DillonParker8
- SD Michael
- DLH



**Circle of the Surveyor's Compass (200-499)**

- Morena
- ccharle2
- Wolverine
- DillonParker8
- SD Michael
- RagingSeas
- DLH



**Pedometer Posse (100-199)**

- mdmapper
- DillonParker8
- EmaleeM\_30
- Wolverine
- SD Michael
- RagingSeas
- Madmartigan
- Geo1
- Amandaferr
- DLH



**Society of the Steel Tape (50-99)**

- notedexponent
- Jabo911
- Wolverine
- EmaleeM\_30
- mdmapper
- Veja57
- roadgeek99
- DillonParker8
- mikethompson30
- Ashish D'Souza
- jdobre06
- SD Michael
- jakess61
- DLH
- Geo1
- RagingSeas
- Madmartigan
- Adenosine
- shravya
- arv1996
- Amandaferr



**Order of the Surveyor's Chain (25-49)**

- SenorGIS
- DillonParker8
- JSelfridge
- Boymonkey
- Wolverine
- EmaleeM\_30
- SFan
- NickasonM
- Veja57
- DavidS
- mikethompson30
- MHDgis1
- jakess61
- Ashish D'Souza
- jdobre06
- SD Michael
- ArtJournalGrl
- shravya
- DLH
- Geo1
- RagingSeas
- Madmartigan
- Patricia Solis
- destiny
- Adenosine
- arv1996

CONTACT US AT: [nationalmapcorps@usgs.gov](mailto:nationalmapcorps@usgs.gov) for suggestions, questions, additions to the next newsletter, or if you would like to be removed from the email list.

Or call Elizabeth McCartney at 573-308-3696

