

Agency Report – Invasive Plants

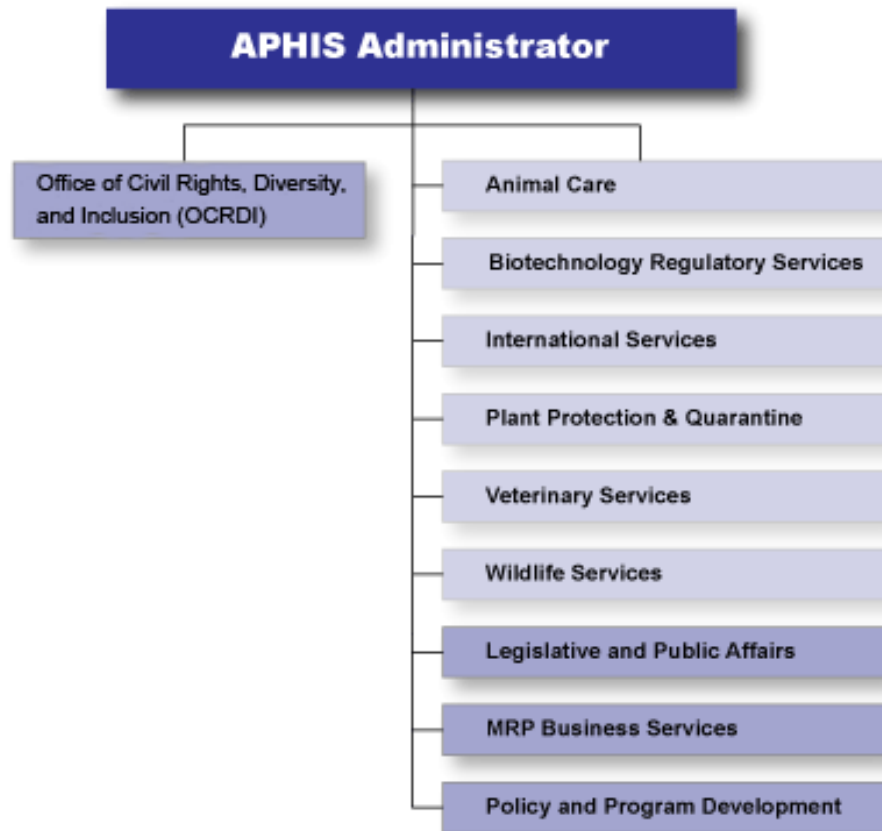
Jonathan Jones

USDA – APHIS (Animal and Plant Health Inspection Service)



FICMNEW Planning Retreat
October 7, 2015
Washington DC (and via remote access)

Agency Structure



Animal and Plant Health Inspection Service

The Animal and Plant Health Inspection Service is an agency of the United States Department of Agriculture responsible for protecting animal health, animal welfare, and plant health.

Agency Structure (*what I do*)

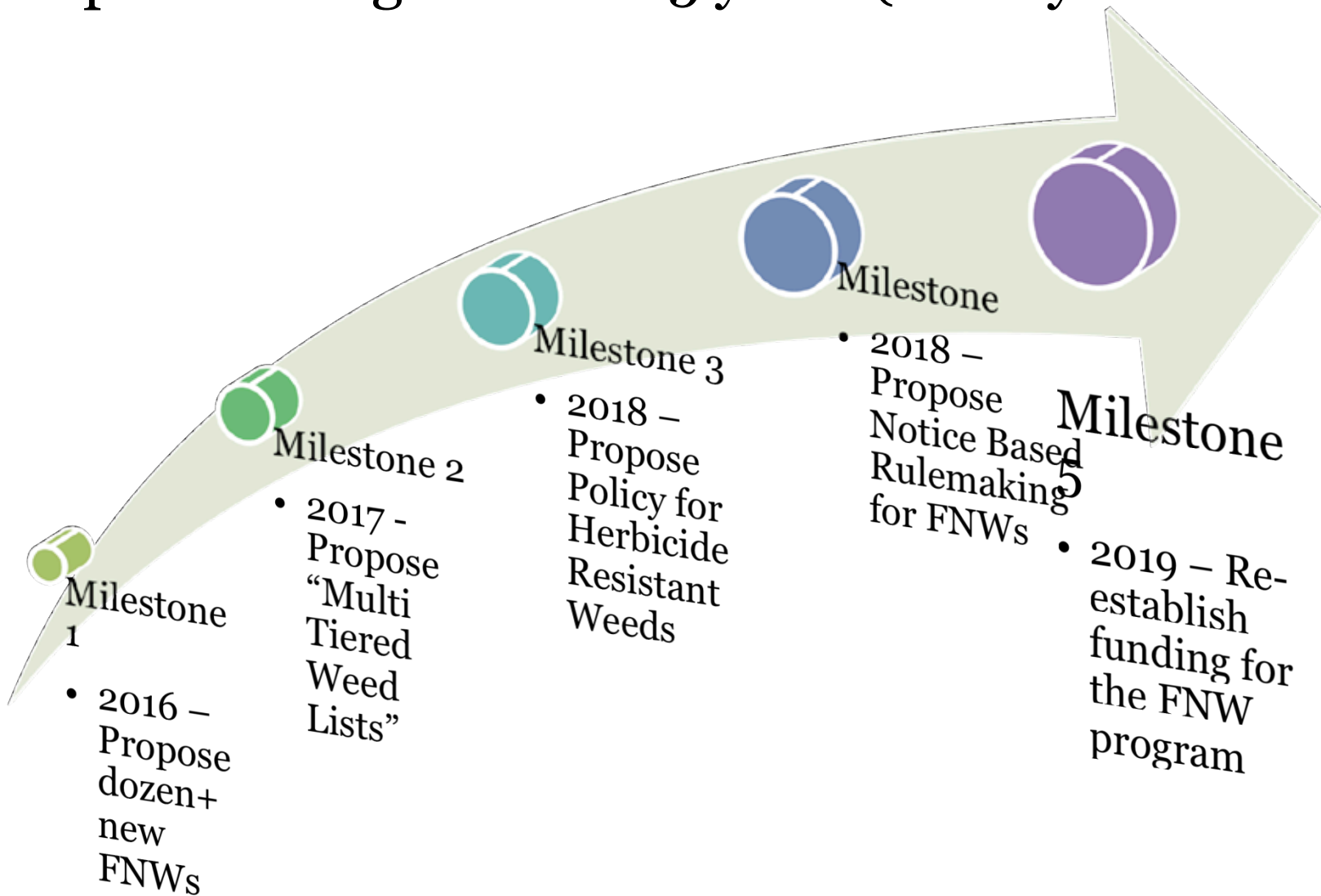
- The Federal Noxious Weed Program works to identify, evaluate and when appropriate, exclude noxious weeds from the US

Activities:

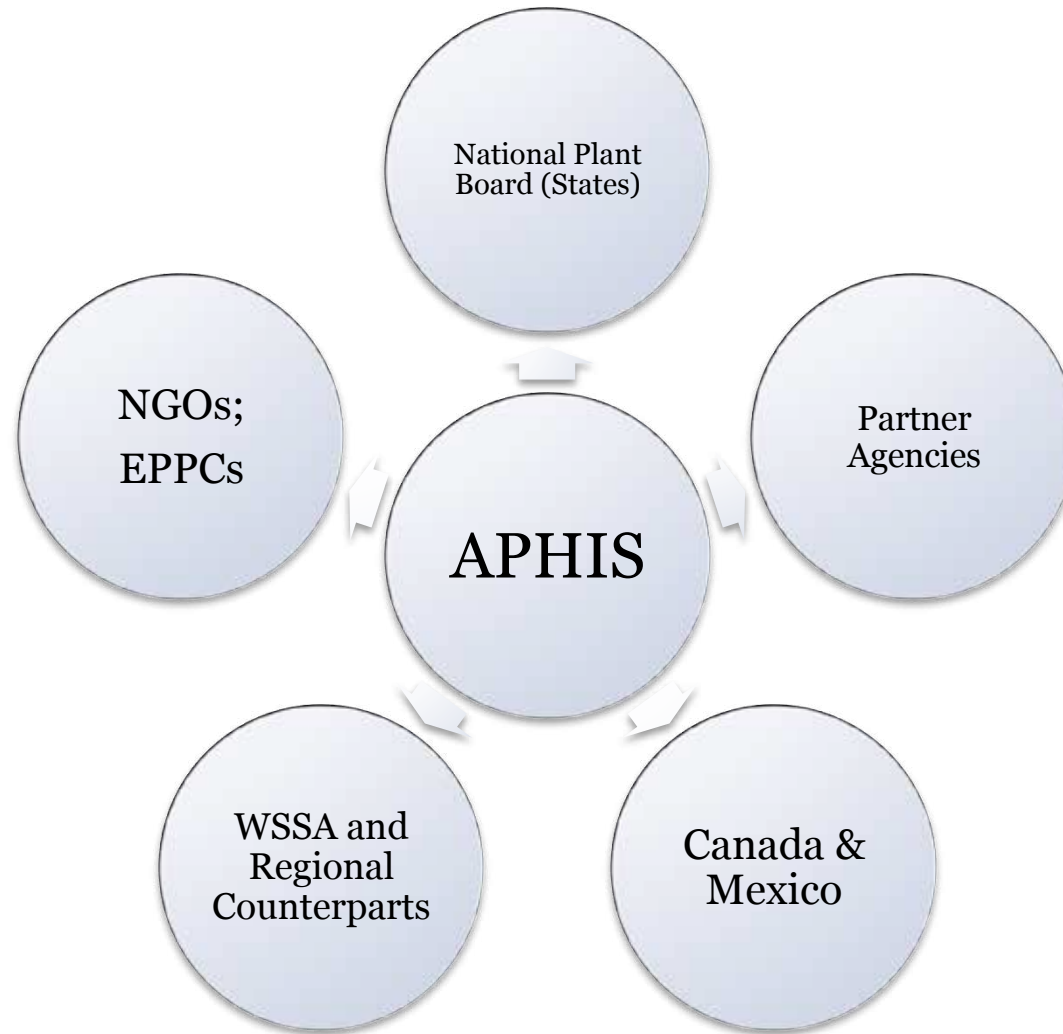
- Consider & evaluate Petitions to list FNWs
- Propose additions, deletions and corrections to the FNW list
- Manage Witchweed eradication program in Carolinas
- Coordinate EPA and USDA Biofuels Team
- Cooperate with BRS on weediness concerns



Top Five things for next 5 years (in very few words)



Major partners





Authorities / Mandates

- Plant Protection Act of 2000
 - consolidates related responsibilities that were previously spread over various legislative statutes, including the Plant Quarantine Act, the Federal Plant Pest Act and the Federal Noxious Weed Act.
 - Allows USDA to issue regulations "to prevent the introduction of plant pests into the United States or the dissemination of plant pests within the United States."



Web links and/or one pager about the program

- <http://www.aphis.usda.gov/planthealth/fnw>
- <http://www.aphis.usda.gov/>