



Community for Data Integration: October Monthly Meeting

Leslie Hsu
CDI Coordinator

October 11, 2017

Ask questions on Slido.com #S350

Scientist's Challenge

Trying to solve a challenging problem and wondering if another group is working on the same issue?

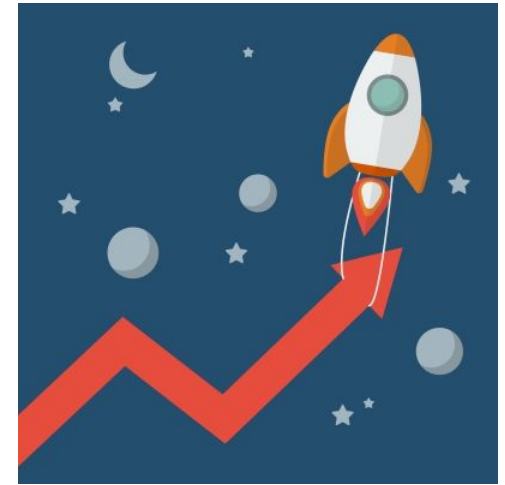


Image courtesy Sira Ananwong at FreeDigitalPhotos.net

The CDI community of practice has a powerful collective body of knowledge that could be tapped to form connections and collaborations.

We'll have Scientist's Challenge "lightning talks" (5 minutes) to kick off Monthly Meetings and post slides on the CDI community forum to stimulate discussion and generate community connections.

Ask questions on Slido.com #S350

Scientist's Challenge

How to participate:

- Posts are on the CDI Forum.
- Any member can comment.
- Any member can suggest a topic to cdi@usgs.gov.

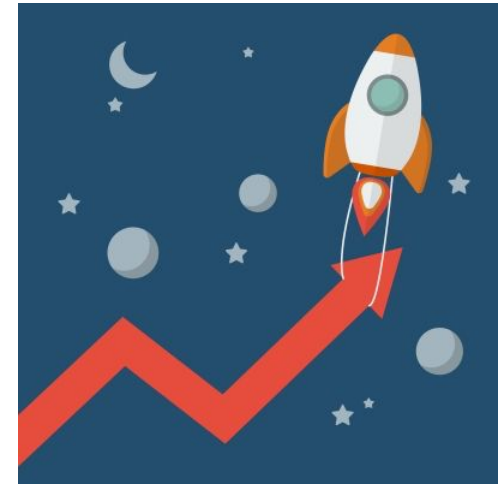


Image courtesy Sira Ananwong at FreeDigitalPhotos.net

Getting started with Jupyter notebooks and R Shiny Apps

Q: Is `code.usgs.gov` a good place to share Jupyter Notebooks?

A: This is certainly possible and is being done by other projects already... Keep in mind that `code.usgs.gov` is a Git hosting solution for *versioning* files.... I would not use it more generally as a file *storage* solution. (- Eric Martinez)

Getting started with Jupyter notebooks and R Shiny Apps

Q: Are there any training resources for pySB?

A: Several resources have been added in the comments on the Scientist's Challenge post for code repos and notes on the API. (- Drew Ignizio)

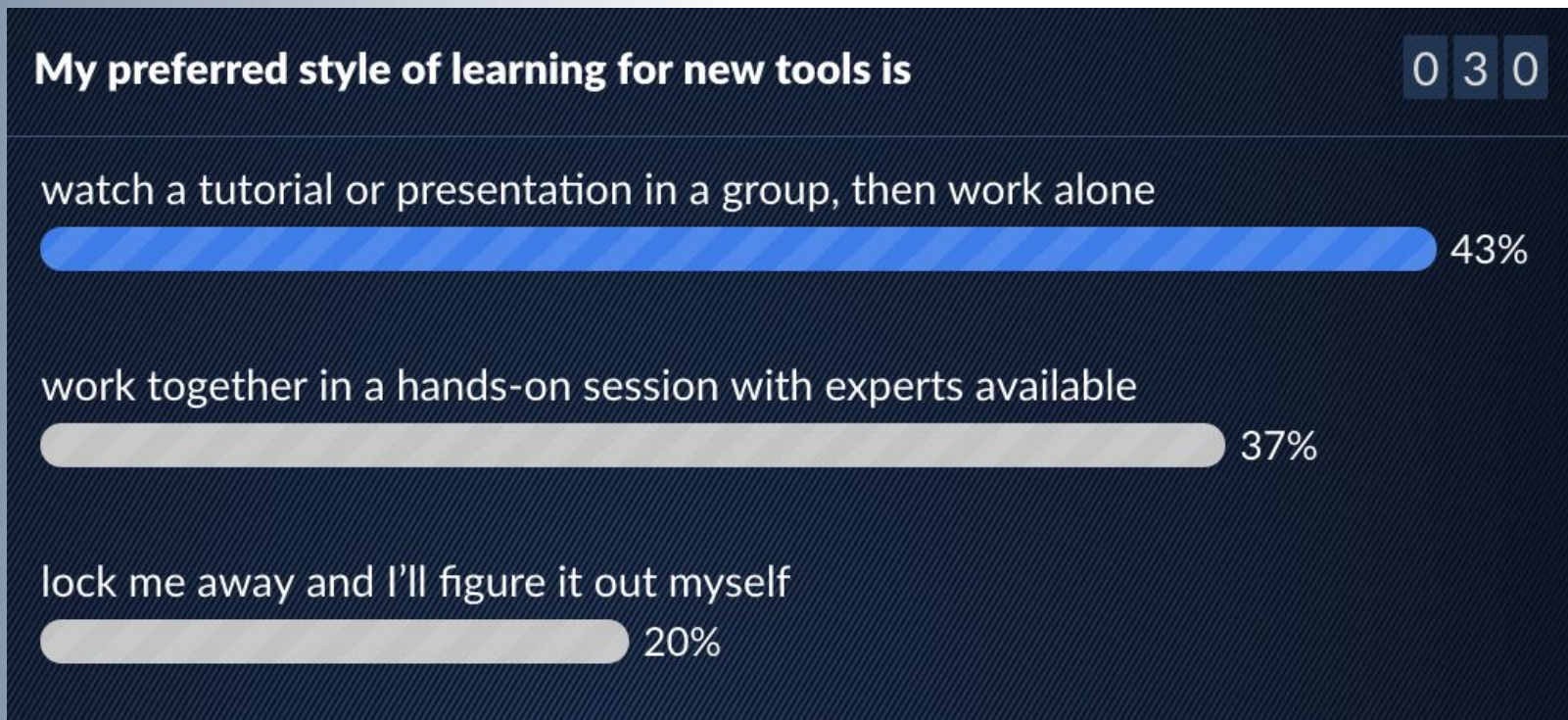
Getting started with Jupyter notebooks and R Shiny Apps

Q: What server(s) in USGS are used to host shiny apps? Will a server be purchased and made available...?

A: USGS R recommends putting shiny apps in a custom R package and having users run the app via the package directly in R. See more details at the forum post. (- Laura DeCicco)

Poll

Last time we asked you how you like to learn:



Poll at [sli.do #S350](https://sli.do/#S350)

This time we'd like to hear about what virtual training topic(s) hosted by CDI would you likely attend?

- Data Management Strategies for Researchers
- Effective communication in plain-language
- Version control
- Bulk metadata creation



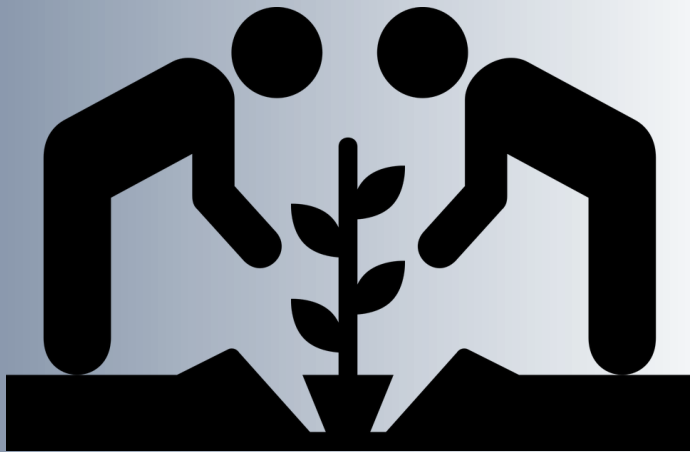
Community for Data Integration: October Monthly Meeting

Leslie Hsu
CDI Coordinator

October 11, 2017

Ask questions on Slido.com #S350

What is the Community for Data Integration?



grow our expertise



communicate across boundaries

Where to get more information:

The CDI Wiki:

<https://my.usgs.gov/confluence/display/cdi>
(or websearch “myusgs cdi”)

News blog | Forum | Join a Group

View the calendar

Browse past projects and events notes

Your feedback is important!

Let us know the topics you want to learn about

Participate in the sli.do polls

Reach the facilitators, Leslie and Madison, at cdi@usgs.gov.



A few highlights from Research Data Alliance Plenary 10

- Data management plan groups
- Software source code group
- Drone group - small UAS data

Browse their groups and outputs and join at
<https://www.rd-alliance.org/>

Poll at [sli.do #S350](https://sli.do/#S350)

Which of these RDA-related topic would you be most interested in hearing about at a CDI meeting? (choose 2)

- Data management plan activities and outputs (Actionable DMPs, Exposing DMPs)
- Software source code activities and outputs
- Array Databases (data cubes) and their uses
- Data Fitness for Use projects

The CDI FY2018 Request for Proposals

stay tuned, the schedule will be different this year

Send questions to: cdi@usgs.gov

Today's presentations

Rich Signell

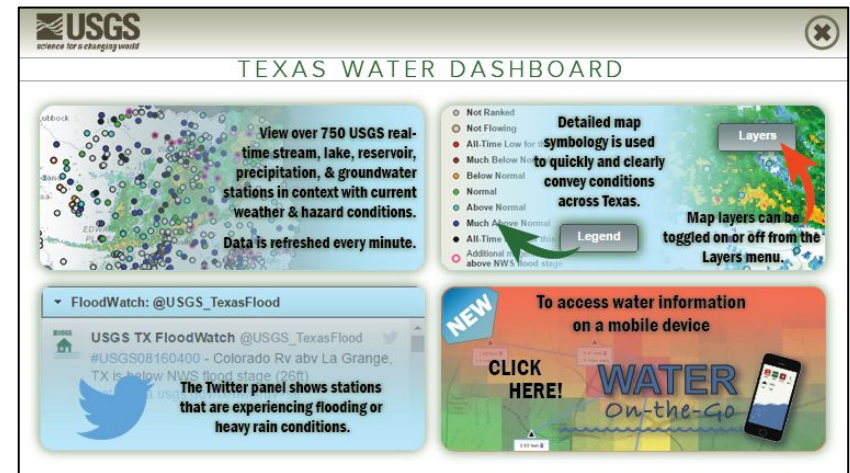
USGS

Reproducible Notebook Series

Daniel Pearson, Joe Vrabel,
Ramona Neafie

USGS

From API to Apps: USGS Texas
Water Science Center Web
Development Approaches and
Analytics



Ask questions on Slido.com #S350

Working Group announcements

Ask questions on Slido.com **#S350**