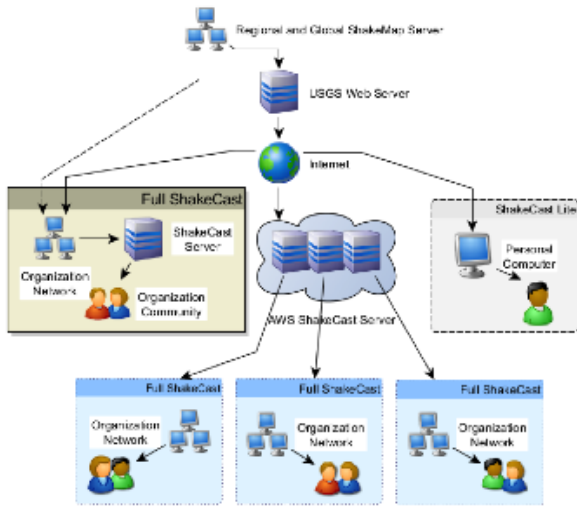


ShakeCast Service Model



ShakeCast Service Diagram

ShakeCast comes in two distinctly different applications, **ShakeCast Remote** (Version 2.0.4) and **ShakeCast Lite**. **ShakeCast Remote** is an application hosting service for the full ShakeCast system by the USGS Fort Collins Science Center. A comparison of three service models is shown to the right.

ShakeCast Comparison Chart

	ShakeCast	ShakeCast Remote	ShakeCast Lite
Installation Fee		✓	✓
RSS Reader for ShakeMaps	✓	✓	✓
Web-based User Interface	✓	✓	✓
Ease of Operation			✓
Multiple Users	✓	✓	
User-defined Facilities	✓	✓	✓
Comprehensive Facility Fragilities	✓	✓	
Event Notification	✓	✓	
Local ShakeCast Product	✓		
Scenario and Testing	✓	✓	
Cost	Free	Free	Free

ShakeCast

Critical users (lifeline utilities, for example) can receive automatic notifications within minutes of an earthquake indicated the level of shaking and the likelihood of impact to their own facilities. ShakeCast is available for [download](#) at the USGS web site.

Usage

An application for automating ShakeMap delivery to critical users and for facilitating notification of shaking levels at user-selected facilities. Full Web-based Graphical User Interface & Documentation

Platform

Windows

Interface

PERL, Apache, MySQL, PHP

Output

Email & cell messaging, Web-based GUI using Google Maps

Authors

Kuo-Wan Lin and David Wald

ShakeCast Lite

Delivers maps of areas affected by an earthquake. Areas of interest can be defined, and shaking thresholds can be set to trigger automatic notifications. Easy to integrate with in-house systems. ShakeCast Lite is available for [download](#) at the USGS web site.

Usage

Automated ShakeMap delivery to users, facilitating use of ShakeMap products and post-download post-commands (script startup)

Platform

Mac, Unix, Windows

Interface

Scripts / text configuration files

Output

ShakeMap products and post-commands (Google Earth, Browser, etc.)

Authors

Kuo-Wan Lin and David Wald

ShakeCast Remote

Organization users who need the full ShakeCast functionality but do not have proper IT resources to operate the system can adopt the ShakeCast Remote hosting service. Users can receive automatic notifications within minutes of an earthquake indicated the level of shaking and the likelihood of impact to their own facilities. ShakeCast Remote instance request form is available for [registration](#) here.

Usage

Same as Full ShakeCast except no access to system level functions.

Platform

All

Interface

Web browser

Output

Email & cell messaging, Web-based GUI using Google Maps

Authors

Travis LaWall and Kuo-Wan Lin